

# SignHealth Domestic Abuse Service

---

Introduction

**THE DEAF HEALTH  
CHARITY**  
**SIGNHEALTH**



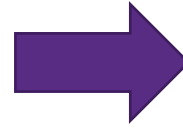
## Need Support?

---

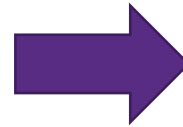
Learn more about the support and advice we provide for Deaf people

# SignHealth Domestic Abuse Service

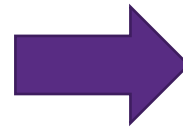
We provide a specialist domestic abuse service to support Deaf people in finding safety and security.



Barriers that Deaf people face

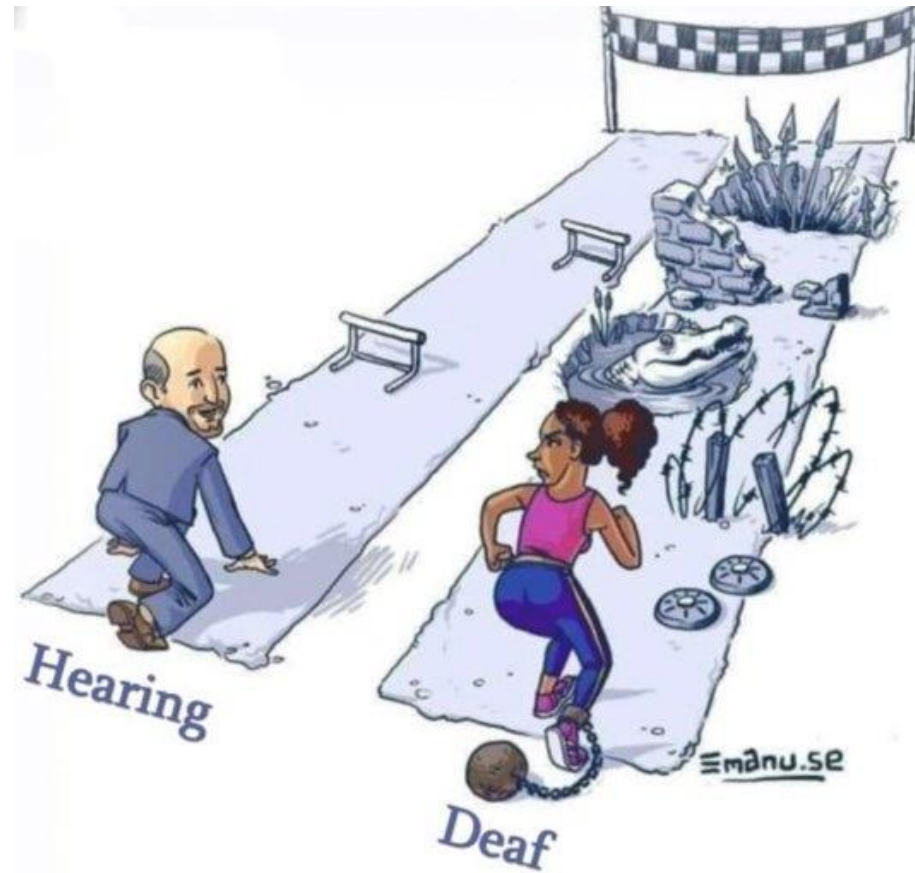


What can you do to support Deaf people?



What support we can offer you

# Barriers



# Barriers to support in Deaf Community

Inaccessible resources

Deaf perpetrators using  
their deaf privileges

Hearing perpetrators  
using hearing privileges

Change in traditions

Shame & fear of  
reporting

Poor awareness of  
support

Vulnerability &  
language barriers

# Barriers to social services

Communication  
barriers

No Deaf Awareness

Wrong assessments  
based on assumptions

Using a family member  
to interpret

Do not understand  
our culture

Often influenced by  
family members

Documents not  
translated into BSL

# What can **YOU** do to support the Deaf community?



- Provide Deaf awareness training for staff led by Deaf professionals
- Make sure your service is accessible for Deaf people – be proactive not reactive!
- Research local Deaf services and make sure you know how to book an interpreter and how it will be funded
- By and For – the best and ideal model
- Signpost to us if they are experiencing domestic abuse or need therapy.
- Please add us to your network
- [www.signhealth.org.uk](http://www.signhealth.org.uk)

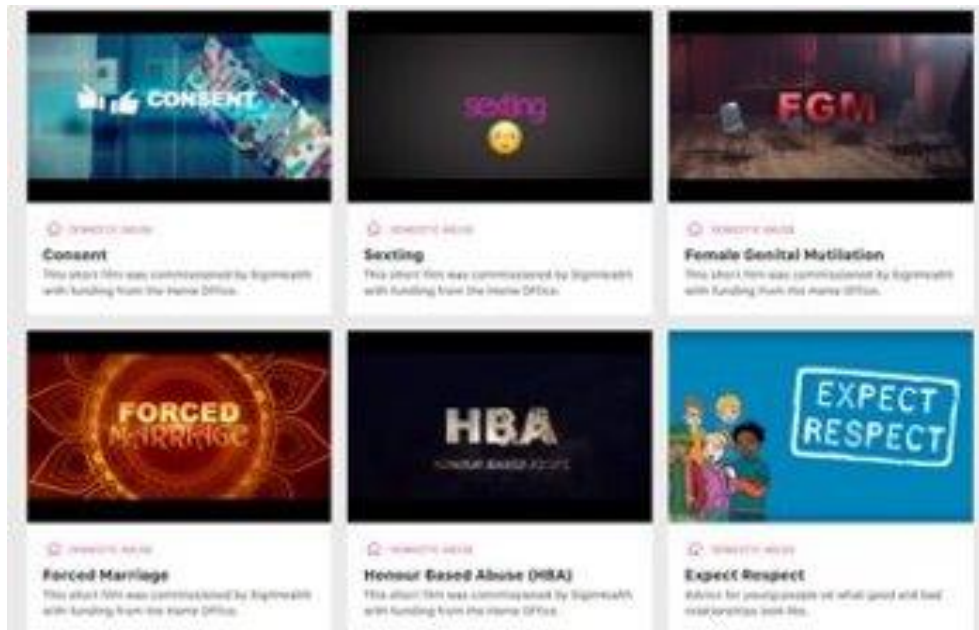
# Our support



- London Councils funded for IDVAs and Community Engagement Worker to reach out to Deaf Londoners.

- Face to face IDVA support for Deaf adults living in London, Kent, Bristol, South Gloucestershire and North Somerset
- Remote IDVA support in England only
- Face to face prevention workshops and 1:1 support for young Deaf people and Deaf families living in London
- Raising awareness in the Deaf Community – visit Deaf clubs, etc.. (London, Bristol, South Glou, North Somerset)
- Raising awareness about Domestic Abuse in the Deaf Community for mainstream professionals

# Our support



## What support do we offer?

- We also offer **Freedom Programme workshops** for Deaf survivors who want to know more about domestic abuse
- **BSL Videos, resources & information** on the website



# Visit our stall

THE DEAF HEALTH  
CHARITY  
SIGNHEALTH

## Top tips when receiving a disclosure of da from a deaf person in the community

**Top tips when receiving a disclosure of domestic abuse from a deaf person**

THE DEAF HEALTH CHARITY SIGNHEALTH

Ask if they are safe

**01: Listen with a non-judgemental attitude.**  
Maintain eye contact while listening. If an interpreter is present to interpret the conversation then look at the deaf person, not at the interpreter. Do not refer to the deaf person as the third person i.e. ask Sandra if she wants a cup of tea.

**02: Show the person that you believe them and that you take their situation seriously.**  
Facial expression is very important - nod more, convey your tone through your facial expressions.

**03: Make sure the deaf person has registered with 999 BSL or text 999.**  
Click for more information about 999 BSL.  
<https://signhealth.org.uk/videos/999-by-text-message/>

**04: Find out their preferred language.**  
If BSL is their preferred language, signpost them to SignHealth Domestic Abuse Service. Show them the DA videos on the SignHealth website which is in BSL.

**05: Remind them it is not their fault.**  
Advise or go with them to see a doctor or A&E if there is an injury. Advocate for a BSL interpreter for the deaf person, if needed.

www.signhealth.org.uk

Deaf people can text us directly on  
07800 003421

Or email us at da@signhealth.org.uk

---

**Referrals:** We can accept referrals  
from professionals.

[www.signhealth.org.uk](http://www.signhealth.org.uk)

Thank you!